

CHAMOT

Recombinant Human EGF

CM120-100HP

CM120-500HP

CM120-1000HP

CM120-5000HP

CM120-10000HP



CHAMOT

喬默生物技術(上海)有限公司
CHAMOT BIOTECHNOLOGY CO., LTD.

CONTENT

1 产品简介

2 产品组成

3 产品储存

4 产品使用

Recombinant Human EGF (Epidermal growth factor)

编号:	CM120-100HP CM120-500HP CM120-1000HP CM120-5000HP CM120-10000HP	规格:	100 µg 500 µg 1 mg 5 mg 10 mg
类别:	重组蛋白	应用:	Functional Assay

产品简介

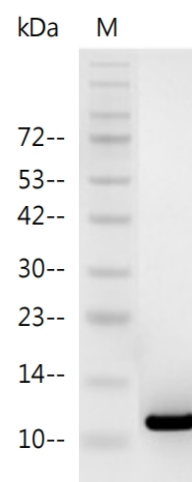
描述: Epidermal growth factor (EGF) stimulates cell growth and differentiation by binding to its receptor, EGFR. Human EGF is a 6-kDa protein with 53 amino acid residues and three intramolecular disulfide bonds. EGF is present in various body fluids, including blood, milk, urine, saliva, seminal fluid, pancreatic juice, cerebrospinal fluid, and amniotic fluid. Biological activities ascribed to EGF include epithelial development, angiogenesis, inhibition of gastric acid secretion, fibroblast proliferation, and colony formation of epidermal cells in culture.

来源: *Escherichia coli*

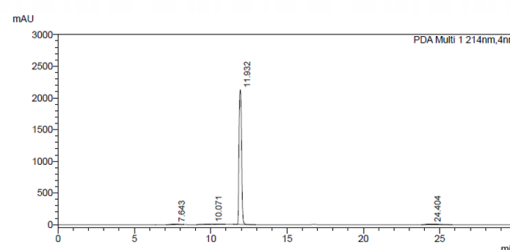
纯度: >95% as determined by SDS-PAGE and SEC-HPLC

生物学活性: Measure by its ability to induce 3T3 cells proliferation. The ED₅₀ for this effect is < 1.0ng/mL. The specific activity of recombinant human EGF is approximately > 1.0 x 10⁶ IU/mg.

内毒素检测: < 0.1 EU per 1 µg of the protein by the LAL method.



SDS- PAGE analysis of recombinant human EGF



The purity of recombinant human EGF is greater than 95% as determined by SEC-HPLC.

蛋白序列： MNSDSECPLSHDGYCLHDGVCMYIE
ALDKYACNCVVGYIGERCQYRDLKW
WELR with polyhistidine tag at the
C-terminus

产品组成

成分： 从含有 1X PBS， pH 8.0 溶液中冻干的
蛋白质.

产品储存/运输

产品形式	储存温度	储存时间
冻干粉	-20℃至-80℃	自收到之日起1年
重悬液（初始）	2℃至8℃	不超过1周
重悬液（经稀释）	-20℃至-80℃	3到6个月

运输方式： 蓝冰

产品使用

- 1、开盖前，建议3000-3500rpm离心5min。
- 2、推荐使用无菌水重悬冻干粉，溶液浓度不低于100μg/mL，不高 于1mg/mL，并室温静置至少20min以充分溶解。勿涡旋剧烈振荡。
- 3、重悬后的溶液，2 -8℃无菌保存不超过1周。
- 4、如需长期保存，推荐使用无菌的含载体蛋白（如0.1 %BSA、10 %FBS 或5 %HSA ）的溶液进一步稀释（不低 于10ug/mL）后分装保存， -20℃至 -80℃无菌保存3到 6个月。无血清实验需求时，可更换为 5%海藻糖溶液作 为载体。避免反复冻融。

WB= Western Blot; IP= Immunoprecipitation; IF= Immunofluorescence; IHC= Immunohistochemistry;
FACS= Fluorescence activated Cell Sorting; FA= Functional Assay